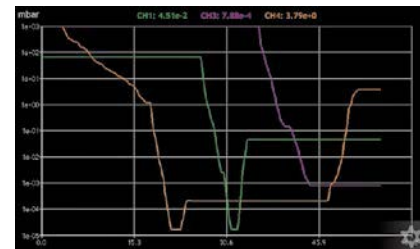


MG15

ION MULTI GAUGE CONTROLLER



Real time pressure charts (data export possibility).

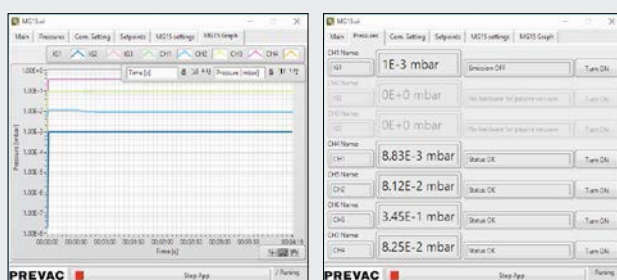
DESCRIPTION

The MG15 is able to support four active gauges and up to three passive gauges, extending the measurement range to 2×10^{-12} mbar. The unit is fully software controlled. The unit can be remotely controlled via one of available interfaces. The unit is equipped with autosave function (the device save your parameters, preset and apply them automatically after restart).

FEATURES

- Measurement range from atmospheric to 2×10^{-12} mbar
- Pressure plots
- Pressure trend graphs
- Measurement filtering (low, med, hi)
- Controls almost all commercially available Bayard-Alpert gauges
- Degassing of Bayard-Alpert with power and time limit
- Supports Ir/W/Thoria filaments
- Bayard-Alpert overpressure protection
- Selectable measurement units: mbar, Torr, Pascal, psia
- Gas specific correction with one customized setting
- Unit over-temperature protection
- 10 individually programmable set-points with threshold and hysteresis functions
- User-defined channel names
- Possibility of active gauges self-identification
- Beam flux monitor
- Black Box version available (option) - without 7" TFT display

CONTROL APPLICATION



TECHNICAL DATA

Supply voltage	100 - 240 VAC, 50 - 60 Hz (power consumption max 200 W)
Measurement channels	up to 7 (active channels: 4; passive channels: up to 3 - number defined at the time of order)
Supported active gauges	CTR90, TTR91, TTR211, PTR225, PKR251/360/361, PCR280, PTR90, ITR90, ITR100, Baratron, ANA-LOG IN, PG105, ATMION, User defined*
Supported passive gauges	IE414, IE514, UHV-24, UHV-24p, MKS Series 274, NUDE-UHV-8A, NR-F-UHV, G8130, BARION basic II, User defined*
Measurement range:	
Passive channel	2×10^{-12} mbar
Active channel	5×10^{-10} mbar
Display range	2×10^{-12} - 2×10^5 mbar
Setpoints relay outputs	10 (4xNO/NC, 6xNO)
Relay outputs with configurable activation signal	4 (Emission, Degas)
Digital inputs	4
Analog outputs	4 (0 - 10V)
Communication interface	RS232/485, Ethernet PROFINET - option (specify at order)
Communication protocol	MODBUS-TCP
User interface	7" TFT display with touchscreen
Dimensions	212.6 x 128.4 x 260.3 mm (WxHxD), 1/2 of 3HE 19"
Weight (approx.)	3.8 kg

* prepared to support many other custom gauges

APPLICATIONS

- Any high and ultra high vacuum systems
- Measurement of ultimate pressure (from atmosphere to UHV range)
- Bakeable and non bakeable systems



PREVAC sp. z o.o. sales@prevac.eu
 Raciborska Str. 61 [+48 32 459 21 30](tel:+48324592130)
 PL44362 Rogów [+48 32 459 20 01](tel:+48324592001)

MG15